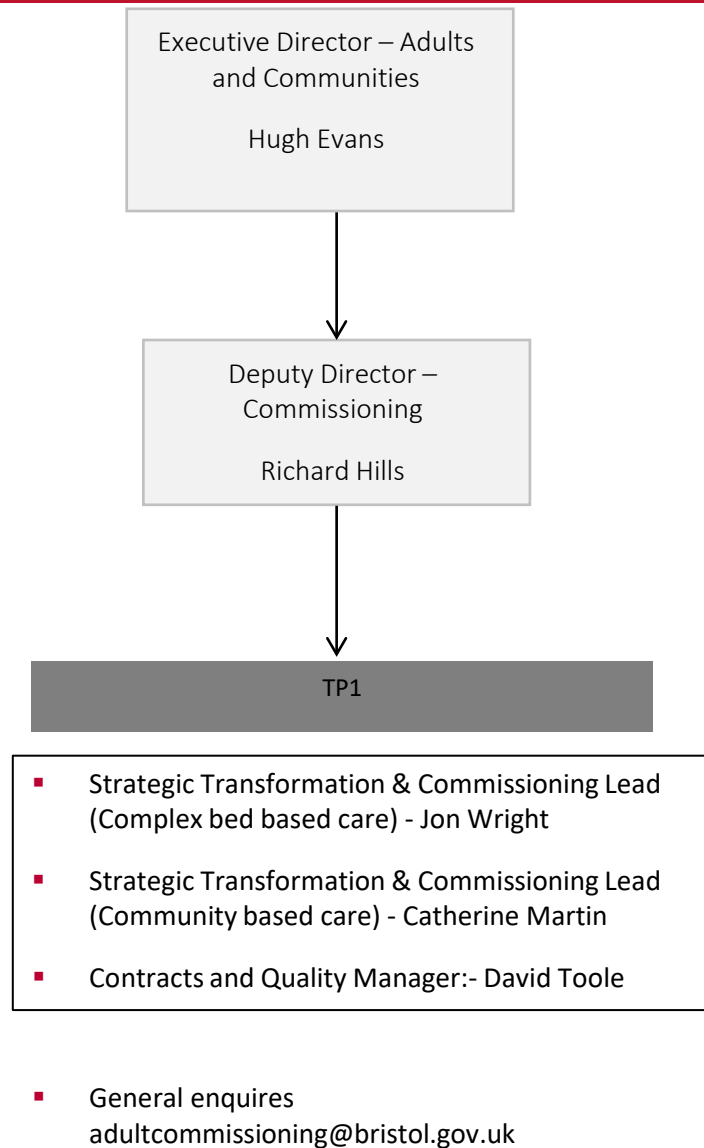
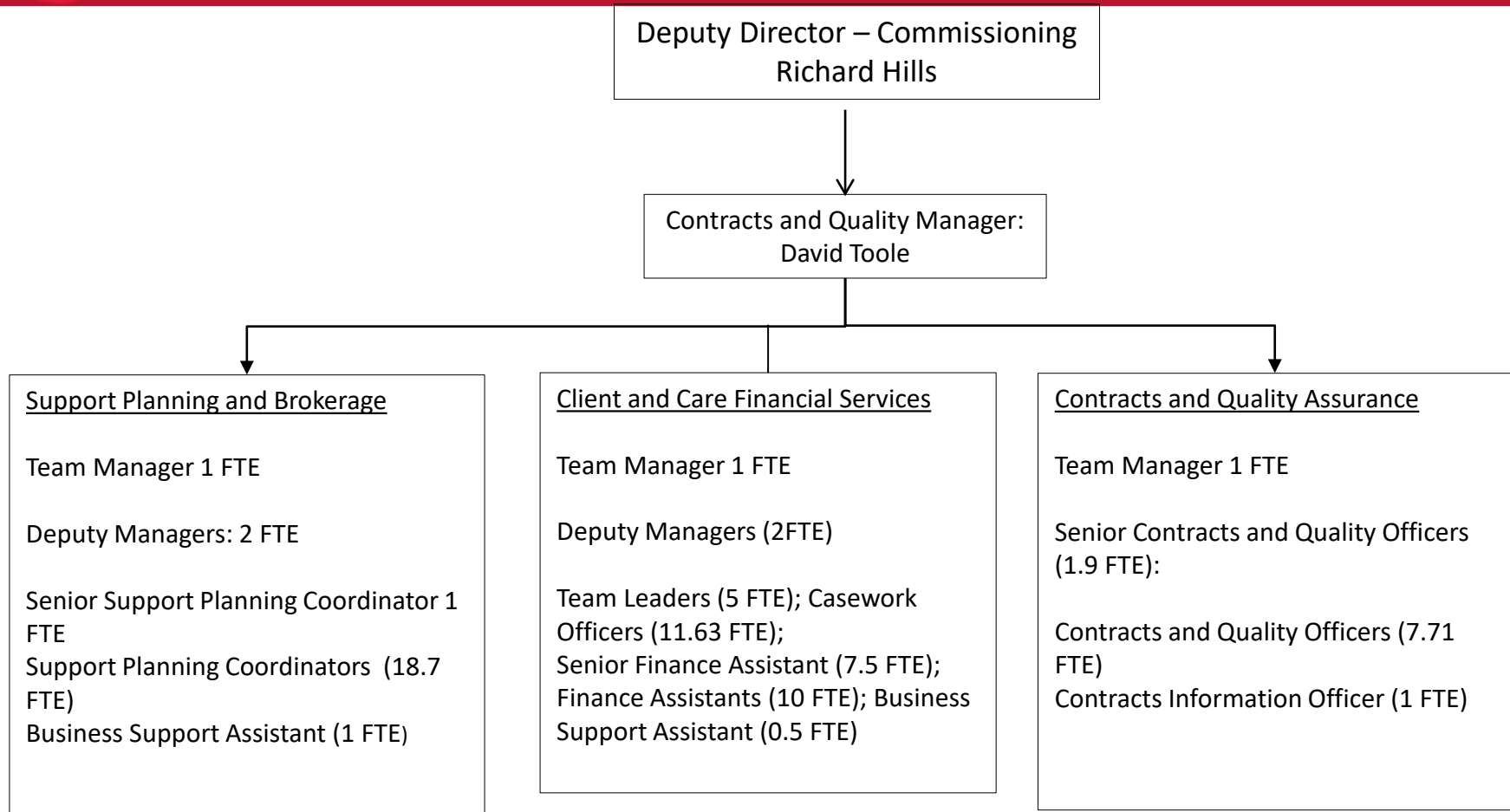


# Adult Care Strategy Commissioning



# Contracts & QA, Support Planning and Brokerage and Client and Carer Financial Services



# Transformation and Commissioning Team

Deputy Director  
Commissioning  
Richard Hills

Strategic Transformation  
& Commissioning Lead  
(Complex bed based  
care)  
Jon Wright

Strategic Transformation  
& Commissioning Lead  
(Community based care)  
Catherine Martin

Transformation  
&  
Commissioning  
Manager

Transformation  
&  
Commissioning  
Manager

Transformation  
&  
Commissioning  
Manager

Transformation  
&  
Commissioning  
Manager

Transformation  
&  
Commissioning  
Manager

Transformation  
&  
Commissioning  
Manager

Transformation  
&  
Commissioning  
Officer

Transformation  
&  
Commissioning  
Officer

Transformation  
&  
Commissioning  
Officer

Transformation  
&  
Commissioning  
Officer

Transformation  
&  
Commissioning  
Officer

# Contact Details

A red silhouette of the Bristol skyline is visible in the background of the slide, featuring various buildings, a bridge, and a ship.

- Richard Hills - [Richard.Hills@bristol.gov.uk](mailto:Richard.Hills@bristol.gov.uk)
- Catherine Martin - [Catherine.Martin@bristol.gov.uk](mailto:Catherine.Martin@bristol.gov.uk)
- David Toole - [David.Toole@bristol.gov.uk](mailto:David.Toole@bristol.gov.uk)
- Jonathan Wright - [Jonathan.Wright@bristol.gov.uk](mailto:Jonathan.Wright@bristol.gov.uk)